

# A TRAUMA FUNDAMENTALS COURSE THAT WORKS FOR YOU & YOUR BUSY SCHEDULE

## Start training your staff immediately

- Engaging, interactive modules
- No boring bullet point slides or talking heads
- Frequent knowledge checks

## Start learning immediately

- No waiting for the next class
- Perfect for night and evening shift workers
- Move through the content at your own pace
- Go back and review as needed

## Reduce your costs

- No travel or commuting costs
- No parking fees
- No additional child care expenses

## Course material & CE hours

- More content and more CE hours (16) than the live TCAR course
- Instant CE certificate access after course completion
- 150+ page electronic syllabus is included. Go green!
- 1-year access to all course content

**TCAR**<sup>®</sup>  
EDUCATION PROGRAMS

**TCAR**<sup>®</sup>  
EDUCATION PROGRAMS  
33456 Havlik Dr.  
Scappoose, OR, USA 97056

### TECHNICAL SPECIFICATIONS FOR YOUR ONLINE LEARNERS

- Any Windows, Mac, iPad, or Android device with a screen that's at least 8" diagonal
- A standard pair of headphones or earbuds
- A strong WiFi connection (4-5 bar cellular will work, but might be a bit slow loading each new screen)
- The most recent version of browser (e.g., Google Chrome, Firefox, Safari, Internet Explorer 11, Microsoft Edge)
- The latest version of a device's operating system (e.g., Mac OS, IOS, Android, Windows). Devices over 5-years old may not be able to display content correctly



TCAR Education Programs (a division of Visionem Inc.) is accredited as a provider of continuing nurse education by the American Nurses Credentialing Center's Commission on Accreditation. Continuing education hours are also provided through Visionem Inc., a provider approved by the California Board of Registered Nursing, Provider Number CEP 15483 for **16 contact hours of continuing nursing education.**

**TCAR**<sup>®</sup>  
O N L I N E

FOR INDIVIDUAL LEARNERS



A COURSE FOR NURSES  
ACROSS THE TRAUMA SPECTRUM

**ONLINE  
LEARNERS**

TRAUMA CARE AFTER RESUSCITATION

# AN ENGAGING, INTERACTIVE, POST RESUSCITATION TRAUMA COURSE DESIGNED FOR LEARNER FLEXABILITY

## Program Description

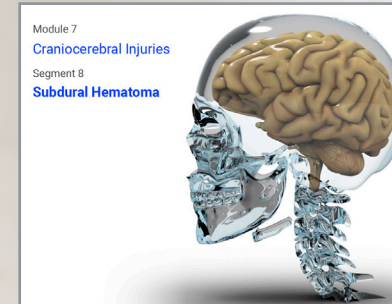
Unlike trauma education programs targeted at prehospital and emergency care providers, the Trauma Care After Resuscitation (TCAR) course is specifically designed for acute care, critical care, and perioperative nurses.

Now, for the first time ever, you don't need to be at a major trauma center (or in a classroom) to experience the world's highest quality trauma nursing program. With TCAR ONLINE™, you can receive elite trauma training wherever you are, whenever you are ready to begin.



TCAR ONLINE™ MAKES  
"GET TCAR VERIFIED"  
THE EASIEST ITEM ON YOUR TO-DO LIST

Includes a 160+ page full-color e-syllabus



Physiologic Process	Parameter	Assessment	Potential Etiologies	Interventions
Pulmonary Ventilation	PaCO <sub>2</sub> , ETco <sub>2</sub>	Respiratory Status: Rate, Depth, Work of Breathing, Lung Sounds, CDR	Pharyngeal/Tracheal Obstruction, PPK, Rib FX, Altered Mental Status, Airway Occlusion, SCI	Pulmonary/Pym Hygiene Chest Tube/Mt. Function Assisted Ventilation Drug Therapy
Diffusion	PaO <sub>2</sub> , FIO <sub>2</sub> , P/F Ratio	PaO <sub>2</sub> , SpO <sub>2</sub> or SaO <sub>2</sub>	Pulmonary Edema, Atelectasis/Consolidation Pneumothorax/ARDS Pulmonary Fat Embolism	Supplemental O <sub>2</sub> Mechanical Ventilation PEEP/CPR Drug Therapy
Hemoglobin Availability	CoO <sub>2</sub> (Oxygen Content)	Hemoglobin Level	Hemorrhage: External/Internal Hemolysis	Hemostatic Neuropharmacology Transfusion (and yellow) Prosthetic Agents
Cardiac Output	CO or CI (ml/m <sup>2</sup> ) Systolic Pressure Pulse Quality Distal Perfusion	CO or CI (ml/m <sup>2</sup> ) Systolic Pressure Pulse Quality Distal Perfusion	Thoracic/Aortic Dissection Volume Loss/Overload Cardiac Tamponade/Tension PTK Cardiac Dysfunction Vasodilation/Constriction	Rate Control Volume Manipulation Obstruction Removal Cardiac Support Vasopressor/Inotropes
Tissue O <sub>2</sub> Utilization	ScvO <sub>2</sub> /SvO <sub>2</sub> /NIRS Serum Lactate (Oxygen Consumption) Base Deficit	ScvO <sub>2</sub> /SvO <sub>2</sub> /NIRS Serum Lactate (Oxygen Consumption) Base Deficit	Low O <sub>2</sub> Delivery Metabolic Demands Capillary Occlusion Cellular Dysfunction	Increased O <sub>2</sub> Delivery Reduced O <sub>2</sub> Demands Vasopressor Medications Sedative Interventions

## TCAR ONLINE™: ANYWHERE, ANYTIME

For FAQs, sample content, and pricing information go to [www.tcarprograms.org](http://www.tcarprograms.org) or call 503-608-4900